



FESHIEBRIDGE

LODGES

WELCOME PACK



Exclusive holiday and activity accommodation in the heart of the breathtaking Scottish Highlands, these newly built lodges offer the perfect escape for families and groups all year round.

Feshiebridge Lodges, Feshiebridge, Kingussie, PH21 1NG



WELCOME TO FESHIEBRIDGE LODGES

Feshiebridge Lodges offer beautifully designed accommodation to be enjoyed by anyone who wants to unwind and explore the spectacular surroundings of the Cairngorm Mountains. Nestled in picturesque forest surroundings, we are pleased to offer four 3-bedroom lodges, a large studio apartment and a spacious 1-bedroom apartment which can double up as a large communal living and dining area for groups. Feshiebridge lies within the Cairngorms National Park in the Scottish Highlands, the largest national park in the UK with spectacular mountain and forest scenery and a great variety of things to do, from castles and distilleries, to walking trails, family fun and endless outdoor activities all year round. Just a few miles from Feshiebridge is the scenic town of Aviemore, where you will find shops, cafés, bars and local attractions.

RAF CENTRAL FUND

Feshiebridge lodges offer beautifully designed accommodation to be enjoyed by RAF personnel, their families, friends and anyone else who wishes to visit the Cairngorms National Park.

To find out more about the charity and how we support serving RAF personnel, please visit www.rafcf.org.uk



Donations

As a charity, the RAF Central Fund keeps those serving in the Royal Air Force fit and healthy by enabling them to access sport and physical activities at all levels. If you would like to support us in our work then we'd love to hear from you. Please email us at fundraising@rafcf.org.uk or find us on Just Giving to make a direct donation <https://justgiving.com/rafcf>. Thank you.

PARKING AND SITE MAP

Parking is available on site for all guests, including several accessible parking bays. Please see the below site map for your accommodation access points.



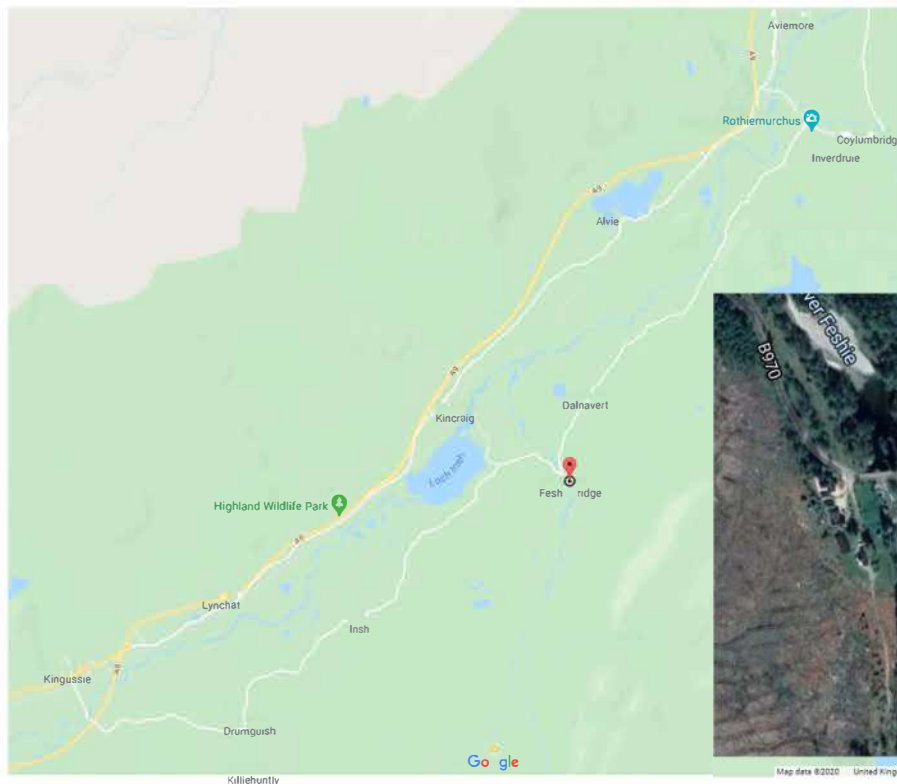
If you have any issues during your stay, please contact Sykes Cottages on 01244 352498. If you have an issue out with normal office hours, please call 01244 617646.



LOCATION

Aviemore – 8 miles, Kingussie – 9 miles, Grantown-on-Spey – 23 miles, Inverness – 30 miles.

Situated in the heart of the Scottish Highlands and in the Cairngorms National Park, Feshiebridge, near the local town of Aviemore is an ideal holiday location. The area offers good fishing, superb walking in the surrounding hills and woodland, and golfing on the many fine courses in the area. There is also watersports, riding and birdwatching, with rare species to be found including Ospreys and Capercaillie. You will find Aviemore an ideal base for touring the Highlands and nearby Grampians. The landscape is dotted with historic castles and tempting distilleries. Enjoy fishing on the majestic River Spey all summer, and winter skiing on the Cairngorms and Lecht ski centres, appealing to thrill-seekers and novices alike.



[MAP VIEW LINK](#)
[SATELLITE VIEW LINK](#)



LOCAL TRANSPORT

Feshiebridge is less than an hour away from Inverness airport and approximately 15 minutes away from Aviemore train station. Should you need a taxi during your stay we recommend making a booking in advance.

Airports – The nearest airports are: Inverness – 1hr drive, Aberdeen – 2hrs 15min drive and Dundee – 2hrs drive.

Trains – There is a train station in Aviemore (PH22 1PD) which is a 16 minute drive and another in Kingussie (PH21 1EJ) which is an 18 minute drive. Alternatively the Caledonian Sleeper can be booked from London to Newtonmore, Kingussie and Aviemore.

Car Hire – Aviemore, Inverness (Avis/Europcar).

Taxis – Please call Aviemore Taxis on 01479 811111 or 01479 810118.

Buses – Stagecoach Route 37 runs at school times from Glenmore to Kingussie, stopping in Feshiebridge at Ord Cottage, a 10 minute walk from the lodges. Other bus services operate from Grantown-on-Spey and Inverness to Aviemore and Newtonmore.

If you have any issues during your stay, please contact Sykes Cottages on 01244 352498. If you have an issue out with normal office hours, please call 01244 617646



ACTIVITIES

Feshiebridge is a perfect base to experience everything the Cairngorms National Park has to offer. From water sports to winter sports, distilleries to birdwatching, castles to cycling, the area is brimming with activities for all ages, all levels of experience, and all weathers!

Lagganlia Outdoor Centre – 1minute drive – Feshiebridge, PH21 1NG
Mountain biking, canoeing, dryslope skiing and more.

Loch Insh Outdoor Centre– 4 minute drive – Insh, PH21 1NU
Range of water activities/sports, archery, biking, skiing, snowboarding, shop and restaurant.

Speyside Distillery – 15 minute drive – Kingussie, PH21 1NS
Distillery visits by appointment.

Strathspey Railway – 16 minute drive – Aviemore, PH22 1PY
Steam trains, dining and whisky tasting.

Highland Wildlife Park – 16 minute drive – Kincaig, PH21 1NL
Wildlife park full of local and exotic animals.

Cairngorm Brewery – 20 minute drive – Aviemore, PH22 1ST
Brewery shop and tour.

Highland Folk Museum – 20 minute drive – Newtonmore, PH20 1AY
Open air museum with centuries of Highland history.

Cairngorm Mountain– 30 minute drive – Aviemore, PH22 1RB
Mountain shop, bar and snowsports.

To see more, please visit the *Visit Cairngorms* website attractions [here](#).

ANNUAL EVENTS

There are events held all across the National Park year round. Bond with the Cairngorm locals and discover part of the Highland's history and culture. A few popular annual events include:

- The Santa Express train journeys from Strathspey Railway
- The Spirit of Speyside whisky festival Thunder in the Glens
- Cairngorm Adventure Triathlon
- Aviemore Half Marathon
- Run Balmoral
- Speyside Triathlon

Please see the *Visit Cairngorms* site for a list of both major and minor annual events.



LOCAL FUEL

There are two local petrol stations, a BP in Aviemore (PH22 1PD) and an Esso in Newton more (PH21 1AP).

SHOPS AND SUPERMARKETS

There are a few supermarkets nearby, as well as a lovely farm shop and deli. If you feel like staying in both Tesco and Asda provide an online shopping delivery service to the lodges.

Co-op – Kingussie, PH21 1HR. Aviemore, PH22 1UQ

Tesco – Aviemore, PH22 1RH

Aldi – Aviemore, PH22 1AF

M&S Food Hall – BP Garage, Aviemore, PH22 1QH

Rothiemurchus Farm Shop & Deli – Aviemore, PH22 1QH

Aviemore has a great selection of shops to suit most needs.

Food and Drink

There are lots of different options to eat out in the Cairngorms, a few local options include:

The Boathouse Restaurant and Bar – Kincaig, PH21 1NU
Locally sourced home-style food

Suie Bar/Pub – Kincaig, PH21 1NA

Mcdui's – Aviemore, PH22 1 RH
Pub food

Rowan Tree Country Restaurant – Aviemore, PH22 1QB
Scottish dining with both traditional and modern dishes

Rothiemurchus Druie Café – Aviemore, PH22 1QH
Seasonal produce with local meats available for breakfast and lunch

La Taverna – Aviemore, PH22 1PT
Italian restaurant and pizzeria with takeaway available

Andersons Restaurant - Boat of Garten, PH24 3BN



ACCOMMODATION INFORMATION

Surrounded by the natural beauty of the Scottish Highlands, Feshiebridge Lodges make a marvellous retreat at any time of year.

Each of the apartments and lodges provide an open-plan living space, where you can enjoy cosying up on the sofas with your family and friends after a day of rambling in the Cairngorms National Park.

When you're not making the most of the delicious eateries in the area, the properties have a well-equipped kitchen in which to prepare your own meals that can either be enjoyed in the dining area or outside when the weather is fine.

In winter months there are wood burning stoves* offering welcoming warmth. The 3 bedroom lodges each provide one ground-floor king-size bedroom, as well as a first-floor king-size bedroom and twin bedroom that each have their own balconies. Additionally, the 3 bedroom lodges and Mountain Hare Apartment offer contemporary and accessible ground floor shower rooms.

If requested in advance the properties can sleep additional guests on the sofa bed in the living area.

Manuals for the oven, induction hob, dishwasher* can be found in the drawer of the TV cabinet, along with the RAF Central Fund's Health and Safety Statement of Intent, Fire Safety Policy and insurance documentation.

**Please note: Osprey Apartment does not have a dishwasher or an internal wood burning stove but does share an external wood burning stove with Mountain Hare Apartment.*

ARRIVALS AND DEPARTURES

Please note that the earliest check-in time is 16:00 and latest departure is 10:00. When you are leaving, please lock the door and leave the keys in the key safe by your door – we recommend you use the key safe every time you leave your lodge/apartment to reduce the likelihood of losing the keys!

EMERGENCIES AND ASSISTANCE

Police, fire or ambulance – call 999 and provide the site address: Feshiebridge Lodges, Kincaig, PH21 1NG.

Doctor – Aviemore Medical Practice 01479 810258.

A&E – Raigmore Hospital, Inverness 01463 704000.

Dentist – Aviemore Dental Practice 01479 810301.

Vet – Strathspey Veterinary Centre 01479 872252.

Miscellaneous emergencies – please call Sykes Cottages on 01244 352498. If you have an issue out with normal office hours, please call 01244 617646.

In the event of an accident, please report to the landlords, the RAF Central Fund, by email on Feshiebridge@rafcf.org.uk.

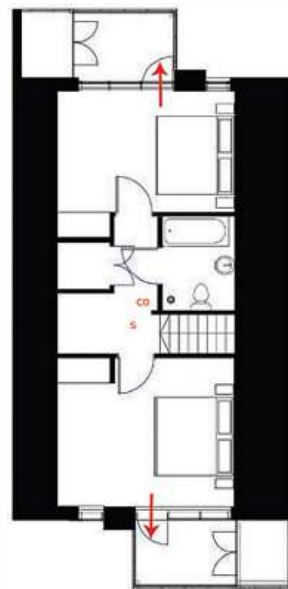
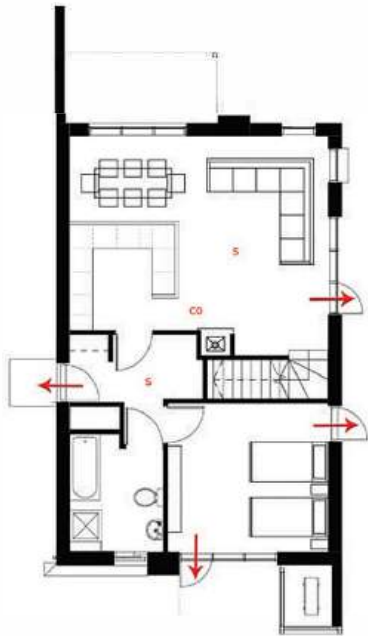


FIRE EXITS AND EQUIPMENT

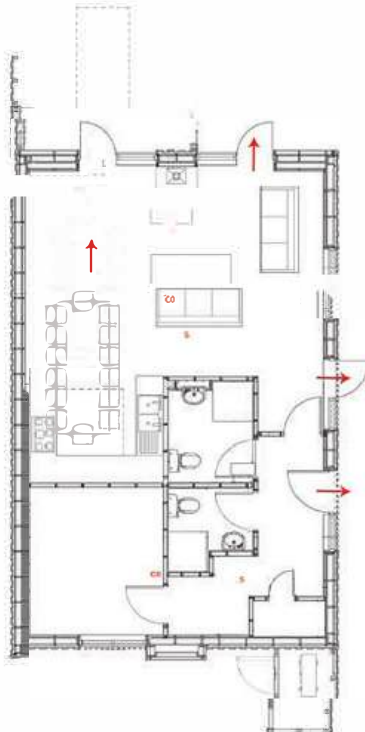
The floor plans below indicate the fire exits, smoke and carbon monoxide detectors throughout the properties. For the 3 bedroom lodges, it is recommended that in the event of a fire guests use the ground floor exit doors to escape. Where this is not possible, the balconies should be used. In addition to the smoke and carbon monoxide detectors, fire blankets have been provided in the kitchen areas.

Red Arrow = Fire Exit S = Smoke Detector CO = Carbon Monoxide Detector EXT = Extinguisher

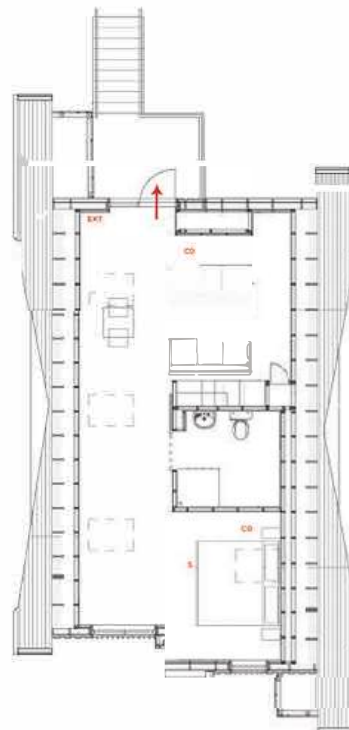
Otter Lodge, Wildcat Lodge, Golden Eagle Lodge, Red Deer Lodge



Mountain Hare Apartment



Osprey Apartment





ACCOMMODATION INFORMATION

Balcony

Please note that the maximum load on a balcony at any one time is 6 persons.

Blinds

The blinds are pulled in a downwards direction from the top using the metal bar.

Please operate the blinds with care, we request that if any children are staying at the lodges parents/adults operate the opening and closing of the blinds.

Chiminea

Small bags of logs can be purchased from the BP Garage in Aviemore.

Please use the companion tool set in the lounge when using the outdoor chiminea.

- When starting your fire use kindling at first and light with fire sticks or rolled up newspaper. Once the fire is going add 2-3 small logs to keep it burning.
- Never leave your chiminea unattended when lit and be aware of children and animals, ensuring they are at a safe distance at all times.
- Be sure there are no flammable objects above, around or in contact with your chiminea during use.
- Allow your chiminea to burn out and cool naturally. Never use water to extinguish the fire as this may cause damage to you, the property and the chiminea.

Hairdryers

Two hairdryers are provided in each of the three bed lodges and are stored in the chest of drawers of the king-size bedrooms. The apartments each have one hairdryer, stored in the bedroom chest of drawers.

Heating

The heating control unit can be found in the kitchen areas of the 3 bedroom lodges and in the bedroom areas of the apartments. Please help us reduce the carbon footprint by setting the temperature at 16 degrees when you are out and also on your departure.

Interconnecting gates

Should you wish to lock or unlock the interconnecting gates (between the 3 bedroom lodges) you will find the padlock key with the front door key of your lodge in the keysafe.

Internet

Due to the remote location of the lodges, satellite TV and Internet have been made available for all our guests. Whilst streaming is permitted and speeds are generally good, due to the nature of the site, signal is not always guaranteed.

Password - Feshiebridge



ACCOMMODATION INFORMATION

Lost keys

Please report lost keys to Sykes Cottages (01244 352498).

Log burner

Small bags of logs can be purchased from the BP Garage in Aviemore.

- Do not use the fire as a waste incinerator.
- Do not allow clothes, towels etc. to dry on and/or near the log burner.
- During use, the outside of the log burner will become very hot. Please use the supplied glove when operating the fire.
- Never leave the log burner unattended.

Pets

Pets are permitted providing Sykes Cottages have been notified at least 48 hours before arrival. Our pet friendly properties are Mountain Hare Apartment, Osprey Apartment, Wildcat Lodge, Golden Eagle Lodge and Red Deer Lodge. Please remember to pack your pet's bed, bowl, toys and any other items you may need.

Please ensure any pet waste is picked up immediately and disposed of in the general waste bin at the entrance of the site as the outside areas are used by all guests.

Smoking

Smoking is not permitted in any of the lodges, apartments, balconies or terrace areas. Please dispose of any waste in the smoking bin in the bike wash area.

Waste and recycling

Please empty any waste and recycling into the bins located at the entrance of the site.

Camping and touring

Camping and touring of any kind is not permitted anywhere on site at Feshiebridge Lodges.

Please leave the property clean and tidy on your departure and place used bed linen and towels in the bathroom.